

A pattern of a girl's blouse is provided. You are advised to study the sketches, instructions and layout carefully before you begin the test.

Materials Provided

- 1 Pattern pieces for the blouse:
 - A – Blouse front
 - B – Blouse back
 - C – Collar
 - D – Pocket
- 2 Lightweight plain cotton fabric 50 cm long by 90 cm wide.
- 3 Sewing thread to match the fabric.
- 4 One large envelope

THE TEST

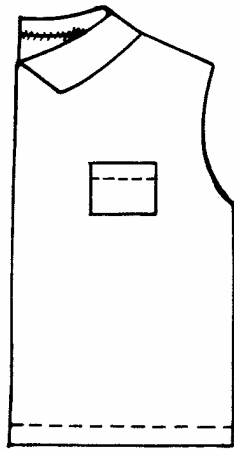
Using the materials provided, cut out and make the **LEFT HALF** of the blouse to show the following processes:

- (a) making of an open seam at the shoulder;
- (b) making of the side seam using a French seam;
- (c) neatening of the blouse front facing;
- (d) preparation of the Collar;
- (e) attachment of the Collar. Use hemming stitches at the back;
- (f) holding the facing on to the blouse using diagonal tacks. **Do not remove;**
- (g) preparation and attachment of the patch pocket;
- (h) management of the blouse hem:
 - (i) use even tacking to hold the hem. **Do not remove;**
 - (ii) use machine hemming.

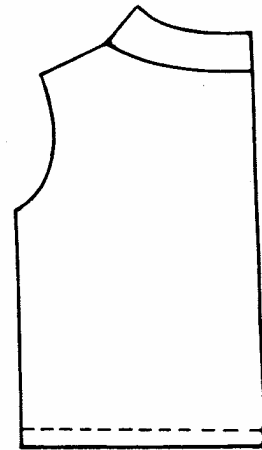
At the end of the examination, remove all pins, firmly sew onto your work, on a single fabric, a label bearing your name and index number.

Fold your work carefully and place it in the envelope provided. Do not put scraps of material in the envelope.

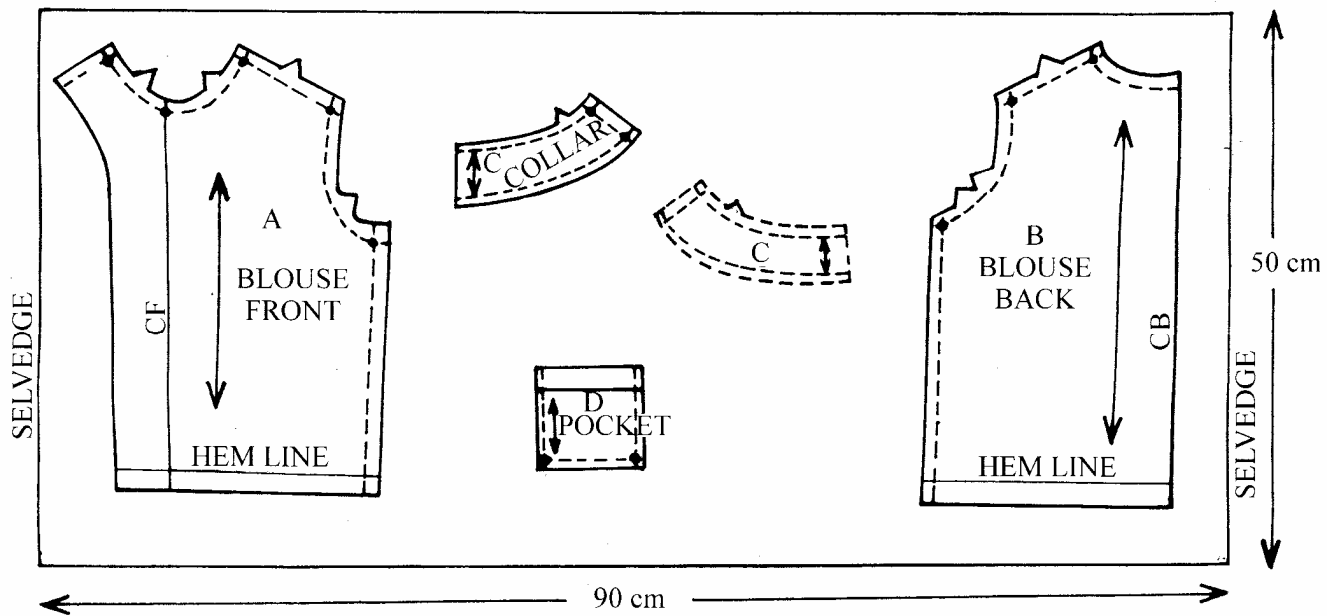
FRONT VIEW



BACK VIEW



THE LAYOUT (Not drawn to scale)



Download more KCSE past papers on

<http://www.kenyaplex.com/questionpapers/Index.aspx?Institution=KCSE>