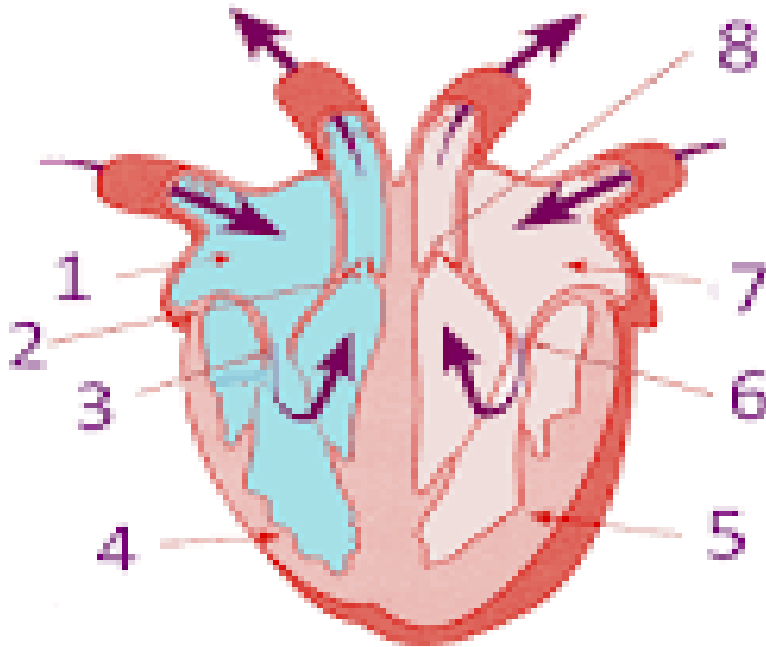


HISTOLOGICAL CHARTS

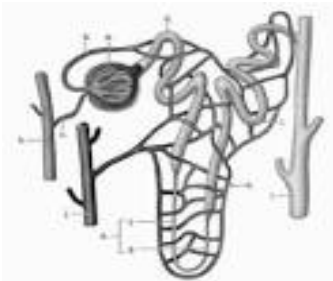
Answer all questions in section A and 2 in section B.

1. Name all the labelled parts and explain how each is involved in blood circulation.



2. Explain the differences in structure between arteries and veins.

3. Explain the urine formation and state and label all the parts of this diagram.



4. State the difference between axial and appendicular skeletons.

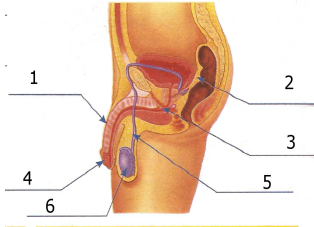
5. Label the parts of this bone.



6.Explain the process of spermatogenesis

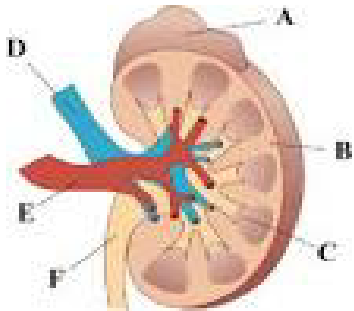
7.Explain the contents of the blood.

8.Name all the labelled parts and clearly state their functions.



9.State the different types of glands found in human body.

10.Use this diagram to name all its structures and list their functions.



GOOD LUCK!!!