

BIOLOGY FORM 3

KAGONDO SECONDARY SCHOOL

MID TERM 3 2016

1. a) What is reproduction? (1mk)

b) Differentiate between sexual and asexual reproduction (2mks)

c) (i) Define the following terms applied in reproduction

I) cell division..... (1mk)

II) chromosomes (1mk)

(ii) Explain the following stages of mitosis interphase

I) Prophase (3mks)

II) Metaphase (3mks)

2. Give two significances of meiosis (2mks)

3. The table below shows the transportation of substances in the human body

Substance	From	Transported by blood to
Oxygen	M	Whole body
N	Liver	Kidney
P	Intestine	Whole body

a) Name the substances represented by

M..... (1mk)

N..... (1mk)

P..... (1mk)

b) Other than transport state 2 other functions of blood (2mks)

4. Give 3 adaptations of testes to their function (1 ½ mks)

5. The diagram below shows a bean seed. Study it and answer the questions that follow.



a) On the diagram indicate

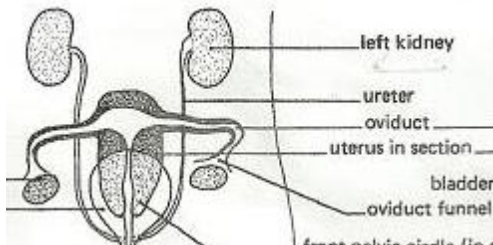
-Testa..... (½ mk)

-Hilum..... (½ mk)

b) State the function of the micropyle during germination (1mk)

c) State the difference between a seed and a fruit (2mks)

6. The figure below shows mammalian reproductive system



a) Give 2 adaptations of uterus to its function (2mks)

b) Use the diagram to describe the process of fertilization (4mks)

c) Explain why four months after fertilization ovaries can be removed from a human female without terminating pregnancy (2mks)