

BIOLOGY FORM FOUR.

KAGONDO SECONDARY SCHOOL

KCSE BOOSTER QUESTIONS

TERM 2 2017

1.a) Explain the meaning of the following terms

i) Heredity (1mk)

ii) Gene (1mk)

b) Differentiate between Trait and Allele (1mk)

2. State the main difference between plants and animals (2mks)

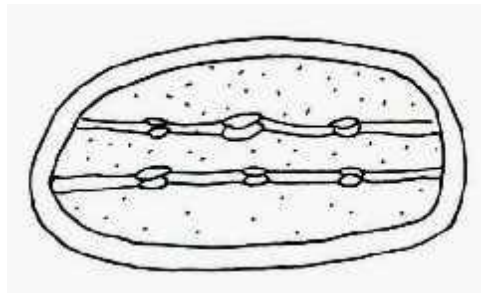
3. Explain the following kingdoms used in classification

a) Fungi (1mk)

b) monera (1mk)

4. Give two functions of Golgi bodies in a living cell (2mks)

5. The diagram below is of an organelle found in plant cells.



a) Name the plant cell that has large number of the organelle above. (1mk)

b) Name the cellular organelle that would be abundant in;

i) Castor oil seeds.(1mk)

ii) Nectaries of the moon flower.(1mk)

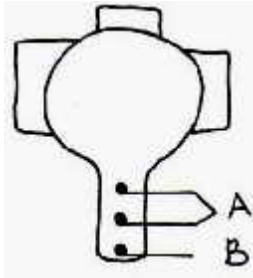
6. Describe the five stages of mitosis Interphase (5mks)

7. Explain how reproduction occurs by the following methods of asexual reproduction

a) Sporulation (3mks)

b) Budding (3mks)

8. The diagram below shows a pollen tube as it develops down the style.



i) Name the part labeled **A** and **B**. (2 marks)

A.....

B.....

ii) State the function of the part labeled **B**. (1mk)

9. Discuss the following kinds of evidence for evolution

a) Comparative anatomy (3mks)

b) Geographical distribution (3mks)

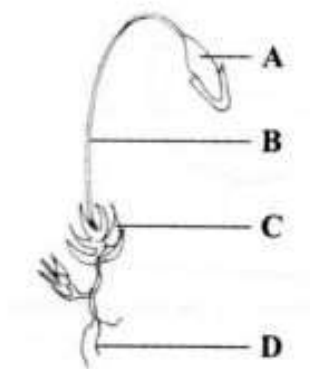
10. Distinguish between closed and open circulatory systems (2mks)

11. Explain how the mammalian heart is adapted to performing its functions (10mks)

12. State two ways in which leaves of plants are adapted to gaseous exchange (2mks)

13. State the role of placenta in female reproductive system (3mks)

14. The diagram below represents a plant in the division Bryophyta.



a) Name the parts labeled **B** and **D**. (2 marks)

A.....

B.....

b) State one function for each of the parts labeled A and D. (2 marks)

A.....

D.....

15. State two precautionary measures which should be taken in preventing an outbreak of cholera.(2mks)