

443/2

KAGONDO SECONDARY SCHOOL

AGRICULTURE PAPER 2

September 2016 OPENER EXAM

2 Hours

SECTION A (30marks)

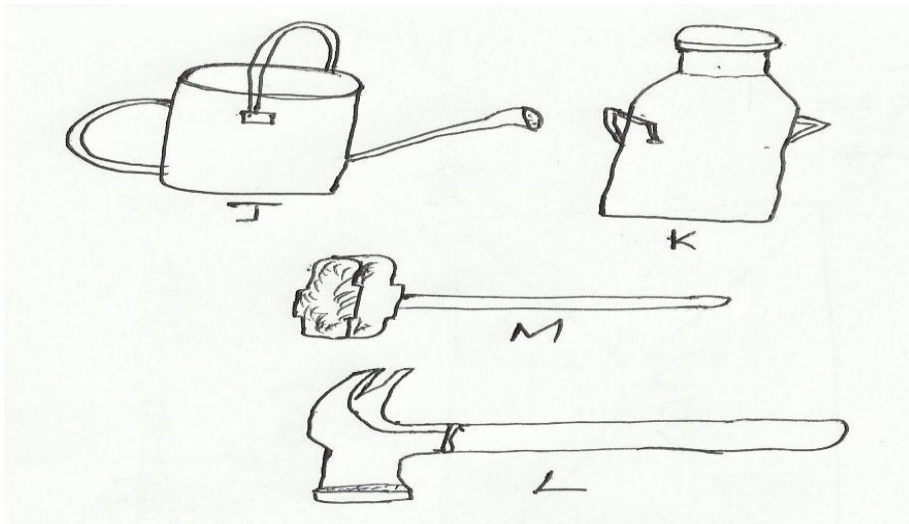
Answer ALL questions from this section.

1. State four characteristics of a good granary (2mks)
2. Describe four reasons for machinery maintenance in agriculture (2mks)
3. State four indicators of internal parasites in livestock (2mks)
4. Give four functions of calcium in dairy cow (2mks)
5. State four supplementary feeds that should be considered when formulating a livestock ration (2mks)
6. Name two kinds of livestock which can be castrated using a rubber ring (1mk)
7. Give four ways in which bees organize themselves in a hive (2mks)
8. State two breeds of Goats reared in Kenya (1mk)
9. State four importances of keeping health records in livestock production (2mks)
10. State four routes through which pathogens enter the body of an animal (2mks)
11. State four maintenance practices done on eggs during incubation (2mks)
12. State four signs of excess heat in the brooder (2mks)
13. Name four light breeds of poultry (2mks)
14. State four conditions that make a cow to withhold milk during milking (2mks)
15. Name four signs and symptoms of anthrax diseases in a cow (2mks)
16. List down four tools used when constructing a wooden item(2mks)
17. Differentiate between cropping and harvesting (1mk)

SECTION B (20 MARKS)

Answer all the questions in this section in the spaces provided.

18. A dairy farmer is required to prepare 100kg of dairy meal containing 60% digestible crude protein (D.C.P) using the pearson's square method, calculate the quantity of soya bean (40% D.C.P) and rice (16% D.C.P) the farmer requires for the dairy meal. (4mks)
19. The diagram below represents farm tools and equipment. Study them and answer the question that follows.



a. **Identify** the uses tools/equipment labeled **J, K, L** and **M** (4mks)

J _____

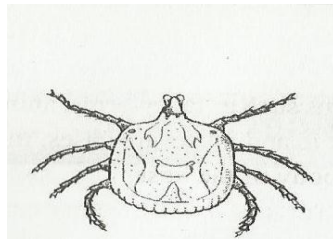
K _____

L _____

M _____

b. **Give two** maintenance practice for the equipment labeled **J** (1mk)

20. The diagram below illustrate livestock parasites

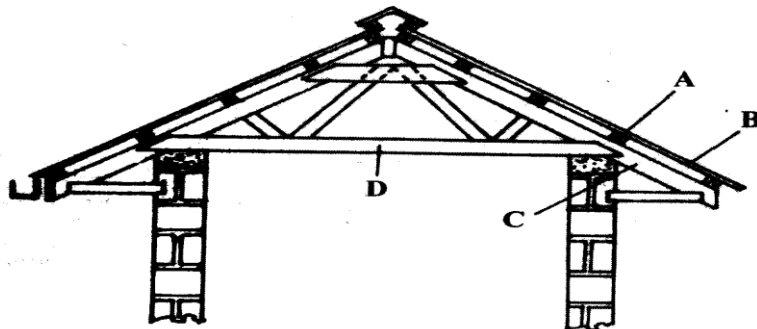


a) Identify the common parasite's host (1mk)

b) State the major harmful effect of the parasites (1mk)

c) Explain three control measures for the parasite (3mks)

21. The diagram below represents parts of a roof



a) Identify the part labeled A and C (1mk)

b) State two types of materials that may be used for the part labeled D (2mks)

c) Give one disadvantage for using thatch for the part labeled B (1mk)

SECTION C (30 MARKS)

Answer any two questions from this section in the spaces provided.

21. a) Discuss the general methods of disease control (10mks)
b) Outline the benefits of using a harrow (5mks)
c) Outline five advantages of farm mechanization (5mks)
22. a) Describe the rearing of chicks from day one up to eight weeks (12mks)
b) Explain four rearing management practices carried out on sheep production (8mks)
23. a) Describe the working of two stroke cycle in a petrol engine (10mks)
b) Explain the factors that influence choice of building materials (10mks)