



MASENO UNIVERSITY

UNIVERSITY EXAMINATIONS 2012/2013

SECOND YEAR SECOND SEMESTER EXAMINATIONS FOR THE DEGREE OF BACHELOR OF ARTS IN APPAREL DESIGN WITH INFORMATION TECHNOLOGY (MAIN CAMPUS)

ADT 246: APPAREL DESIGN AND CONSTRUCTION IV

Date: 15th July, 2013

Time: 8.30 – 10.30 a.m.

INSTRUCTIONS:

- ◆ This paper consists of TWO Sections, A and B.
- ◆ Answer ALL questions from Section (30 marks).
- ◆ Answer ANY TWO questions from Section B (20 marks).
- ◆ Answer ALL questions in the answer booklet provided.

SECTION A(30 marks) Answer ALL questions from this section.

1. Define the following terms as used in this course.
 - (a) Silhouette
 - (b) Body Cathexis
 - (c) Peplum
 - (d) Halo effect(4mks)

2. (a) Using sketches, show how you would apply the following elements and principles of art and design in the design of office wear.
 - (i) Curved lines
 - (ii) Diagonal lines
 - (iii) Asymmetrical balance
 - (iv) Rhythm(4mks)

- (b) Explain how you would incorporate each of the above (Q 2a) elements and principles in the construction of the office wear. (4mks)

3. Explain how official wear design can influence each of the following in a professional setting.
 - (a) Judgment in an interview
 - (b) Leadership
 - (c) Self-esteem(6mks)

4. Give four (4) general considerations in the design and construction of office wear. (4mks)

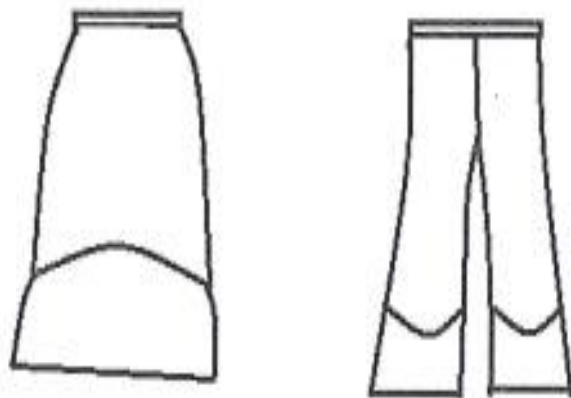
5. (a) State eight (8) advantages of using CAD in pattern development and presentation. (4mks)
- (b) Explain the difference between the raster and vector CAD programs used in pattern making. (4mks)

SECTION B (20 Marks) Answer ANY TWO questions from this section.

6. You are asked to construct an office dress design with the following features. **A curve neckline, seam at waistline, short bell shaped skirt and six curved gores.**
 - (a) Show working sketches of the described dress. (4mks)
 - (b) Sketch the final patterns for the dress design. (6mks)

7. Study the following skirt and trouser designs and illustrate the steps you would follow in adapting the final front patterns from the block pattern.

(10mks)



8. Design a top and skirt/trouser for office wear by providing the following.

- (a) Working sketch (2mks)
- (b) Fashion sketch (2mks)
- (c) Final patterns (6mks)

9. Giving the relevant CAD program (s) by drawing the tool/menu bar, explain the tools you would use to do the following.

- (a) Sketch a bodice block pattern (4mks)
- (b) Label the final pattern (3mks)
- (c) Measure the dimensions of the patterns (3mks)