



MASENO UNIVERSITY
UNIVERSITY EXAMINATIONS 2016/2017

**SECOND YEAR FIRST SEMESTER EXAMINATION FOR DEGREE
OF BACHELOR OF EDUCATION ARTS WITH INFORMATION
TECHNOLOGY**

MAIN CAMPUS

AEN 201: INTRODUCTION TO ENGLISH PHONETICS

Date: 28th November, 2016

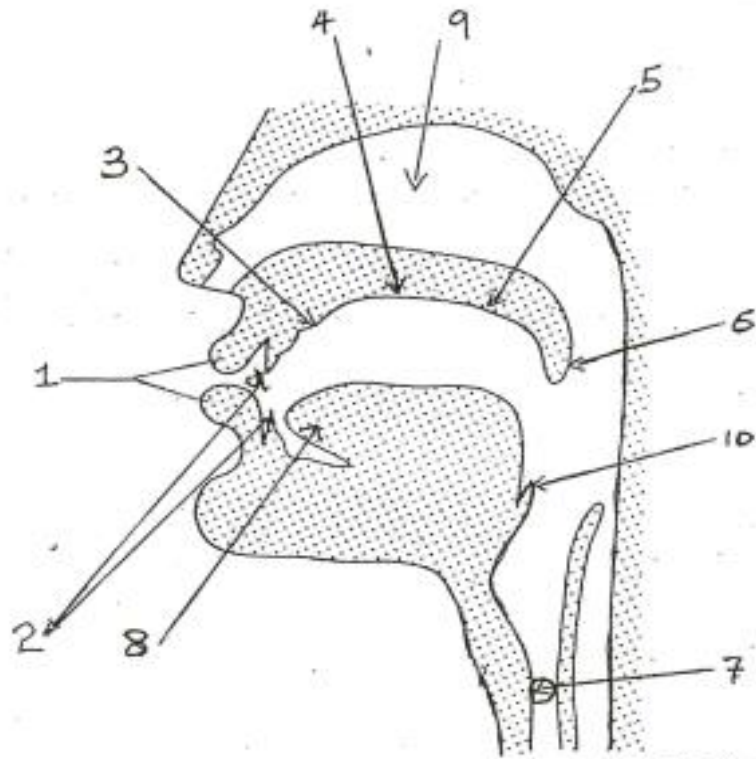
Time: 8.30 - 11.30am

INSTRUCTIONS:

- Answer Question ONE and any other TWO.

Q1. COMPULSORY

(a) Study the diagram below and answer the questions that follow:



- (i) Label parts 1-10 (10 marks)
- (ii) Indicate two different types of sounds produced at parts 1, 2, 3, 4 & 5. (5 marks)
- (iii) Describe any five sounds from the different types mentioned above in (ii). (5 marks)
- (b) English vowel sounds share universal parameters in the description of its sounds. Describe the pure vowels using the FOUR known vowel features. (10 mark)

Q2. With illustrations, describe the following phonetic concepts:

- (i) Articulatory phonetics (4 marks)
- (ii) Acoustic phonetics (4 marks)
- (iii) Phonemes (4 marks)
- (iv) Diphthongs (4 marks)
- (V) Phonetic Alphabet (4 marks)

Q3. a) Write the symbol that corresponds to each of the following descriptions, and then give a word that contains the phoneme.

- a. voiced alveolar lateral
- b. voiceless dental fricative
- c. voiced velar nasal
- d. voiced palatal approximant
- e. voiceless palato-alveolar affricate
- f. voiceless bilabial plosive (12 marks)

b) Rewrite the following words in broad phonetic transcription:

- (i) Spelling (ii) Take (iii) Come (iv) Rely (8 marks)

Q4. (a) Using Pike (1947) model, identify the Onset and Rhyme of the following English words: i) pit ii) key iii) trample iv) ought v) trick (10 marks)

b) Describe the Consonant Clusters in the following words: *break, strike, twelfth, bumps, lapsed, wealth, glow, squash and prompts* (10 marks)

Q5. Demonstrate, with illustrations, how the following concepts of pronunciation impact on connected speech with regard to phonemic segmentation:

- i. Assimilation (8 marks)
- ii. Elision (6 marks)
- iii. linking (6 marks)