

Name

Index Number

231/2

BIOLOGY

Paper 2 (THEORY)

Oct./Nov. 2015

2 hours

Candidate's Signature

Date



THE KENYA NATIONAL EXAMINATIONS COUNCIL

Kenya Certificate of Secondary Education

BIOLOGY

Paper 2 (THEORY)

2 hours



02315150

Instructions to candidates

- (a) Write your name and index number in the spaces provided above.
- (b) Sign and write the date of examination in the spaces provided above.
- (c) This paper consists of **two** sections; **A** and **B**.
- (d) Answer **all** the questions in section **A** in the spaces provided.
- (e) In section **B** answer question **6 (compulsory)** and either question **7** or **8** in the spaces provided after question **8**.
- (f) This paper consists of **12** printed pages.
- (g) Candidates should check the question paper to ascertain that all the pages are printed as indicated and that no questions are missing.
- (h) Candidates should answer the questions in English.

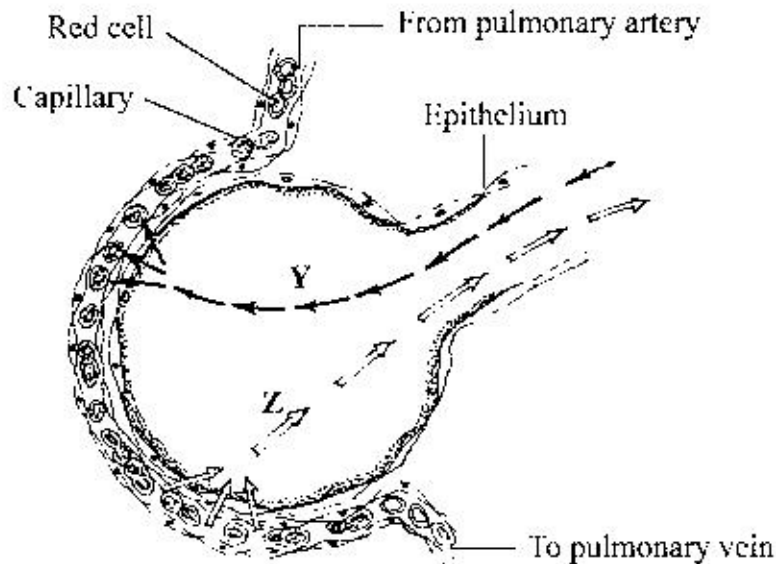
For Examiner's Use Only			
Section	Question	Maximum Score	Candidate's Score
A	1	8	
	2	8	
	3	8	
	4	8	
	5	8	
B	6	20	
	7	20	
	8	20	
Total Score		80	



SECTION A (40 marks)

Answer *all* the questions in this section in the spaces provided.

- 1 The diagram below illustrates a blood capillary surrounding a structure for gaseous exchange in human beings.



- (a) Name the gaseous exchange structure. (1 mark)

.....

- (b) Identify the gases labelled Y and Z.

Y (1 mark)

Z (1 mark)

- (c) How does the gas labelled Y reach the inside of the blood capillary? (3 marks)

.....

.....

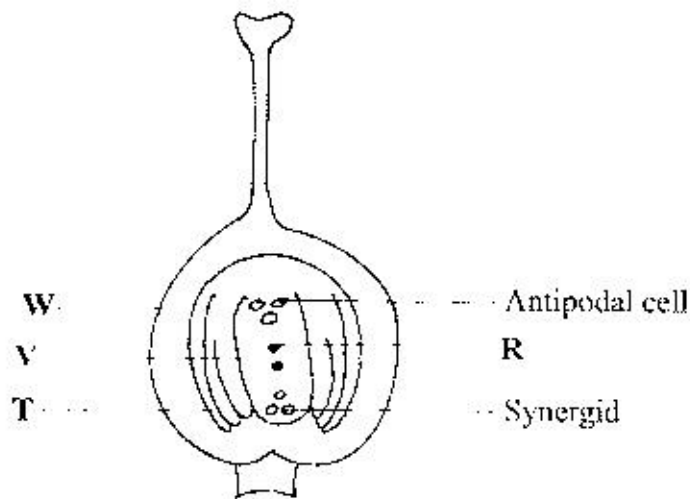
.....

- (d) How does cigarette smoking lead to lung cancer? (2 marks)

.....

.....

2 The diagram below illustrates the structure of the female part of a flower.



(a) Name the part labelled **W**. (1 mark)

.....

(b) Describe what happens when the pollen tube enters the structure labelled **V**. (5 marks)

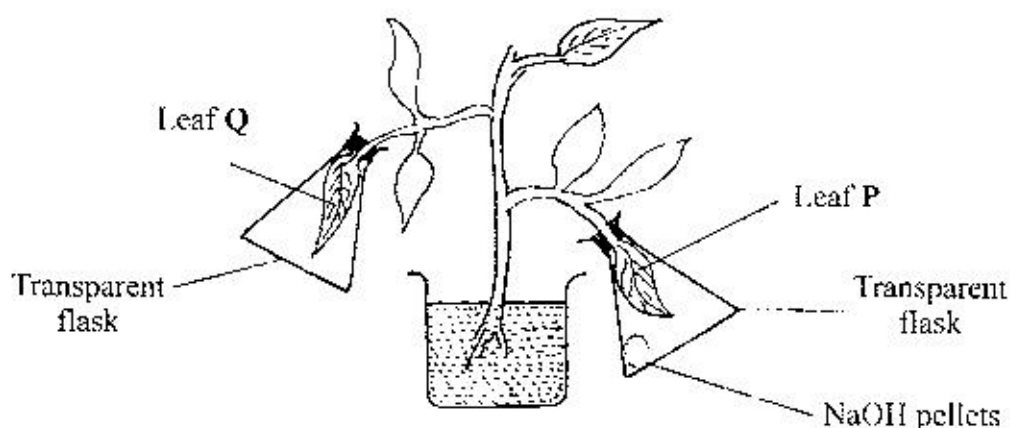
.....

(c) What do the structures labelled **R** and **T** develop into after fertilization?

R (1 mark)

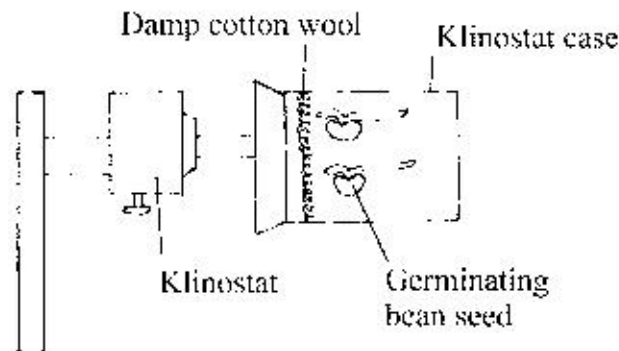
T (1 mark)

- 4 In an experiment to investigate a factor affecting photosynthesis, a potted plant which had been kept in the dark overnight was treated as shown in the diagram below and exposed to light.



- (a) Why was the potted plant kept in the dark overnight? (1 mark)
-
- (b) Which factor was being investigated in the experiment? (1 mark)
-
- (c) (i) Which test did the students perform to confirm photosynthesis in the leaves labelled P and Q? (1 mark)
-
- (ii) State the results obtained in the leaves labelled P and Q.
- P (1 mark)
- Q (1 mark)
- (iii) Explain the results obtained in the leaves labelled P and Q.
- P (1 mark)
- Q (1 mark)
- (d) What was the purpose of leaf Q in the experiment? (1 mark)
-

- 5 In an experiment to investigate a plant response, the set up shown in the diagram below was used.



- (a) Name the type of response that was being investigated. (1 mark)

.....

- (b) If the Klinostat was **not** rotating:

- (i) state the observations that would be made on the seedlings after three days; (2 marks)

.....

- (ii) explain the observations in (b) (i) above. (3 marks)

.....

- (c) If the experiment was repeated with the Klinostat rotating:

- (i) state the observation that was made on the seedlings after three days; (1 mark)

.....

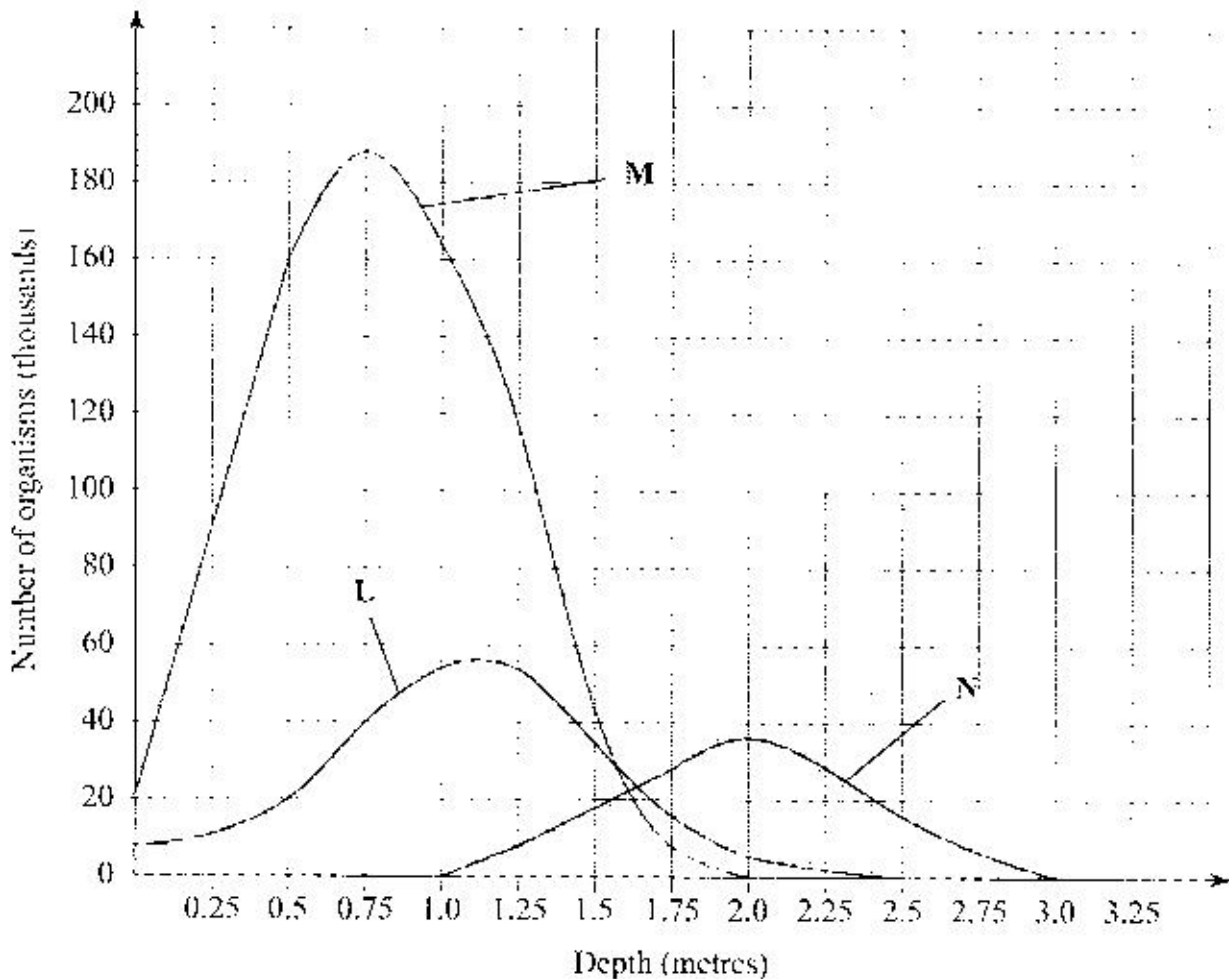
- (ii) give a reason for the observation made on the seedlings. (1 mark)

.....

SECTION B (40 marks)

Answer question 6 (compulsory) and either question 7 or 8 in the spaces provided after question 8.

- 6 The graph below shows the relative numbers of three main species of organisms in a pond.



- (a) Giving a reason for your answer, which of the species is a
- (i) producer? (1 mark)
Reason (1 mark)
- (ii) secondary consumer? (1 mark)
Reason (1 mark)

- (b) State the depths at which each of the populations labelled L, M and N is at its optimum.
- L (1 mark)
- M (1 mark)
- N (1 mark)
- (c) (i) Which method may have been used to determine the population of organisms labelled N in the pond? (1 mark)
-
- (ii) Give a reason for your answer in (c) (i) above. (1 mark)
-
- (iii) State the assumptions made when using the method in (c) (i) above. (4 marks)
-
-
-
-
- (d) State two reasons why primary productivity in the pond decreases with depth. (2 marks)
-
-
- (e) Explain the ecological importance of fungi to plants. (2 marks)
-
-
- (f) Why is flooding likely to lead to a cholera outbreak? (3 marks)
-
-
-

