

B.Sc. MARINE ENGINEERING EMG 2105 ENGINEERING DRAWING

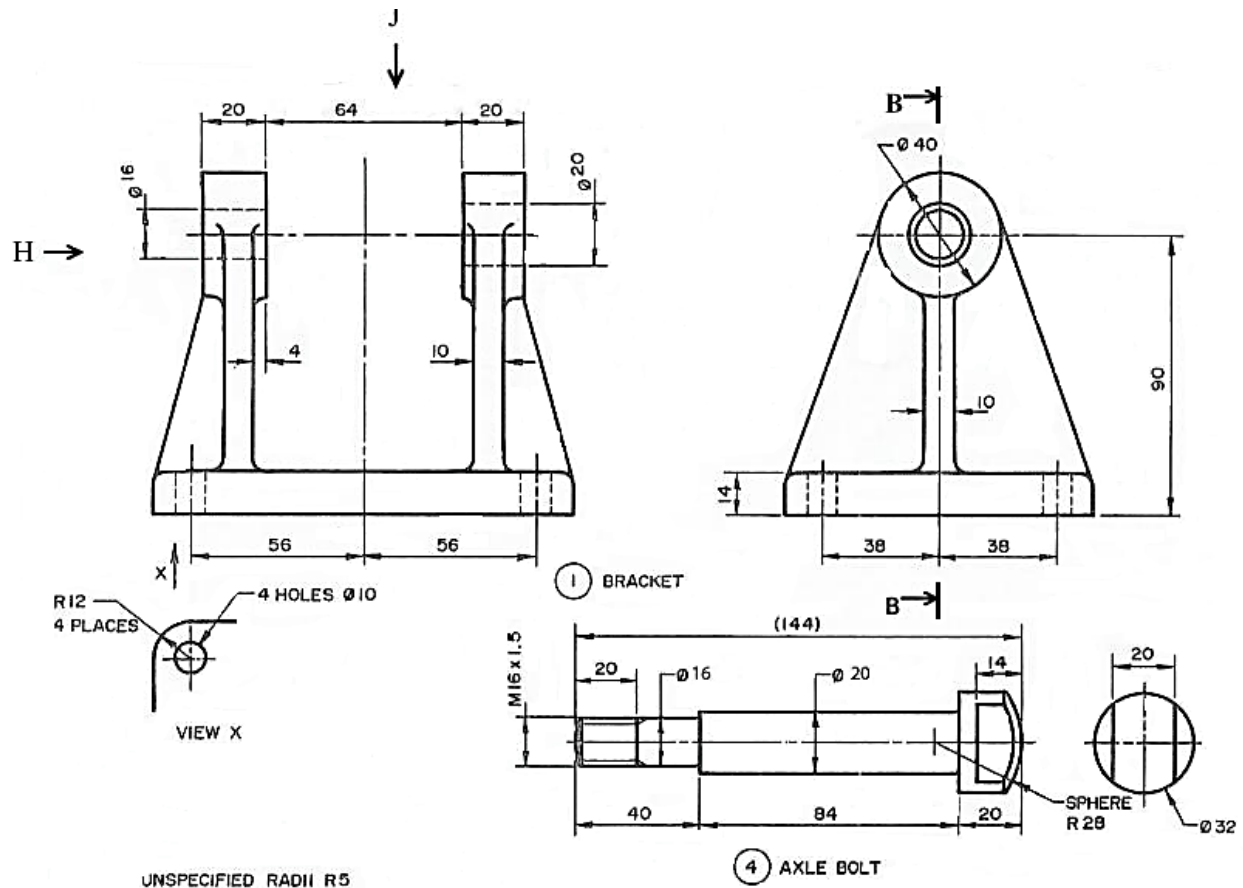
CAT II 2 July 2018

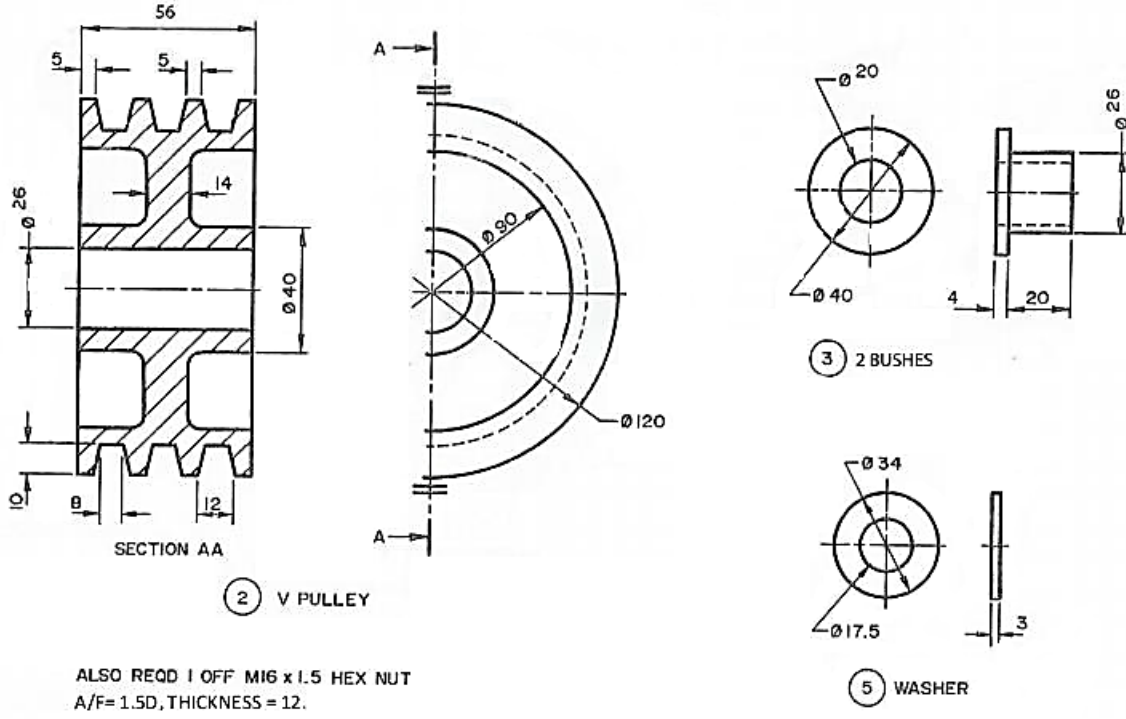
Instructions

1. Submission deadline is Wednesday 4th July 2018 at 1600hrs.
2. Failure to submit CAT II before aforementioned date and time you shall be awarded zero marks

Figure below shows Pulley details in First Angle Orthographic Projections. With the parts fully assembled draw the following in first angle projection.

- a) Section along cutting plane B-B
- b) A view along arrow H without hidden details; showing the nut
- c) A plan view along arrow J without hidden details
- d) Parts list





PARTS LIST

PART NO.	DESCRIPTION	MATERIAL	NO. PER ASSY
1	BRACKET	CAST IRON	1
2	V PULLEY	CAST IRON	1
3	BUSH	PHOSPHOR BRONZE	2
4	AXLE BOLT	MILD STEEL	1
5	M 16 PLAIN WASHHER	MILD STEEL	1
6	M16 X1.5 HEX NUT	MED CARBON STEEL	1