

UNIVERSITY OF EMBU

2016/2017 ACADEMIC YEAR

SECOND SEMESTER EXAMINATION

**SECOND YEAR EXAMINATION FOR THE DEGREE OF BACHELOR OF
EDUCATION SCIENCE & BACHELOR OF SCIENCE IN AGRICULTURAL
EDUCATION AND DEVELOPMENT**

AAS 204: PARASITOLOGY

DATE: APRIL 13, 2017

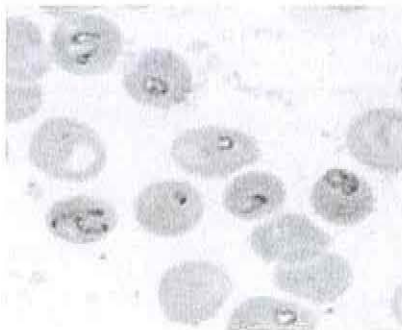
TIME: 2:00-4:00PM

INSTRUCTIONS:

Answer Question ONE and ANY other TWO Questions

QUESTION ONE (30 MARKS)

- a) Describe the various types of immunity mounted by hosts against parasites (5 Marks)
- b) Management of pets is an important strategy in the control of parasitic infections. With dogs in mind, justify this phrase. (5 Marks)
- c) Discuss the morphological adaptations of parasites to their ways of life (5 Marks)
- d) Discuss zoonoses (5 Marks)
- e) The following photomicrograph was obtained from a blood smear prepared using blood from a cow suffering from a parasitic disease.



- i. Identify the parasite and state its clinical manifestations (5 Marks)

ii. Explain the pathology of *Taenia solium*

(5 Marks)

QUESTION TWO (20 MARKS)

a) Differentiate direct and indirect lifecycles

(8 Marks)

b) Describe the lifecycle of *Schistosoma haematobium* sp.

(12 Marks)

QUESTION THREE (20 MARKS)

a) Describe the pathogenesis of *Babesia microti*

(8 Marks)

b) Use of night soil (human faeces) as fertilizer is a dangerous practice as far as transmission of parasitic diseases is concerned. Justify this fact

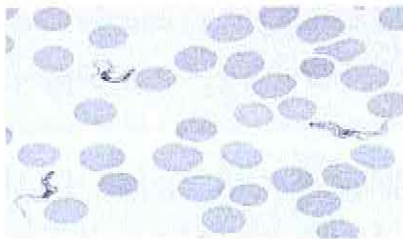
(12 Marks).

QUESTION FOUR (20 MARKS)

a) Discuss the pathogenesis and diagnosis of *Wuchereria bancrofti*

(10 Marks)

b) The following is a photomicrograph obtained from a blood smear of a human suffering from a parasitic disease.



Discuss the two forms of the parasite that are pathogenic to human beings (10 Marks)

QUESTION FIVE (20 MARKS)

a) Discuss the lifecycle of *Plasmodium* parasites

(10 Marks)

b) Discuss ticks as vectors of diseases in animals

(10 Marks)

-END-