



NOVA PIONEER

SCHOOLS FOR INNOVATORS & LEADERS

Form 3 End of Term 2 Geography Assessment

Paper 1

Term 2, 2020.

DATE:

MARKS: 100

2 ³/₄ hours

Name:

.....

Stream #:

House:

.....

Directions:

1. This assessment contains printed pages.
2. Answer ALL the questions in section A, questions 6 and two other questions in the spaces provided in this question paper.
3. Read all questions carefully.
4. Review your answers before turning in your exam.

Mark Tally: Teacher's use only

1	2	3	4	5	7	8	9	10					
---	---	---	---	---	---	---	---	----	--	--	--	--	--

--	--	--	--	--	--	--	--	--	--	--	--	--	--

Section A: (25 Marks)
Answer All Questions in this Section

1. a. Differentiate between a natural satellite and an artificial satellite. (2 marks)
).
- b. State two characteristics of a dwarf planet. (2 marks)
- c. Give two reasons why the earth has a spherical shape. (2 marks)
2. a. Name two categories of extrusive igneous rocks. (2 marks)
- b. State two characteristics of sedimentary rocks. (2 marks)
- c. Give two reasons why the sedimentary rocks are widely spread in the coastal plain in Kenya. (1 mark)
3. a. State two causes of ocean tides. (2 marks)
- b. Mention two characteristics of the perigean tide. (2 marks)
4. The map below shows the location of some mountain ranges.
- a. Name the Fold Mountains in regions marked P, Q and S. (3 marks)



- b. Apart from fold mountains , name two other features resulting from folding. (2 marks)
- c. Give two reasons why it is necessary to study the plate tectonics theory. (2 marks)

5

- a. Define the term absolute humidity (1 mark)
- b. If air at 25 degrees Celsius contains 15.2g/cm³ of water vapor and that the same amount of air can hold a maximum of 25.7g/cm³ of water vapor at the same temperature. Calculate the relative humidity. (2marks)

Section B: (75 Marks)

Answer Question 6 and any other two in this Section

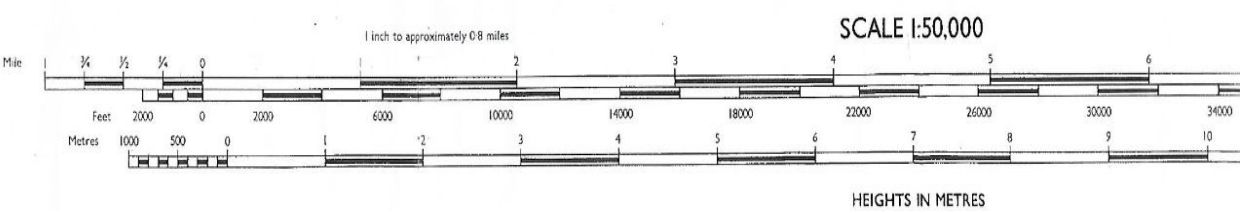
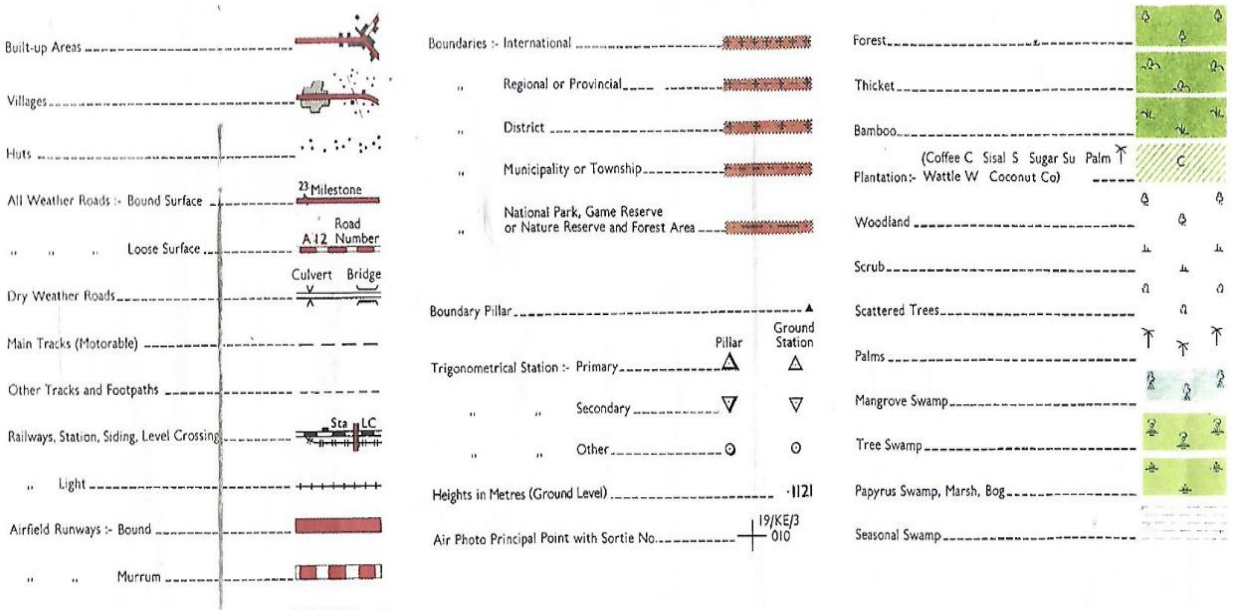
6. Study the section from the map of Kitale (1:50,000) sheet 151/1 provided and answer the following questions

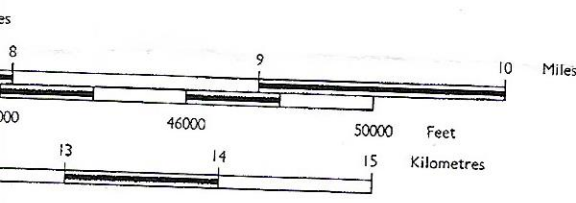
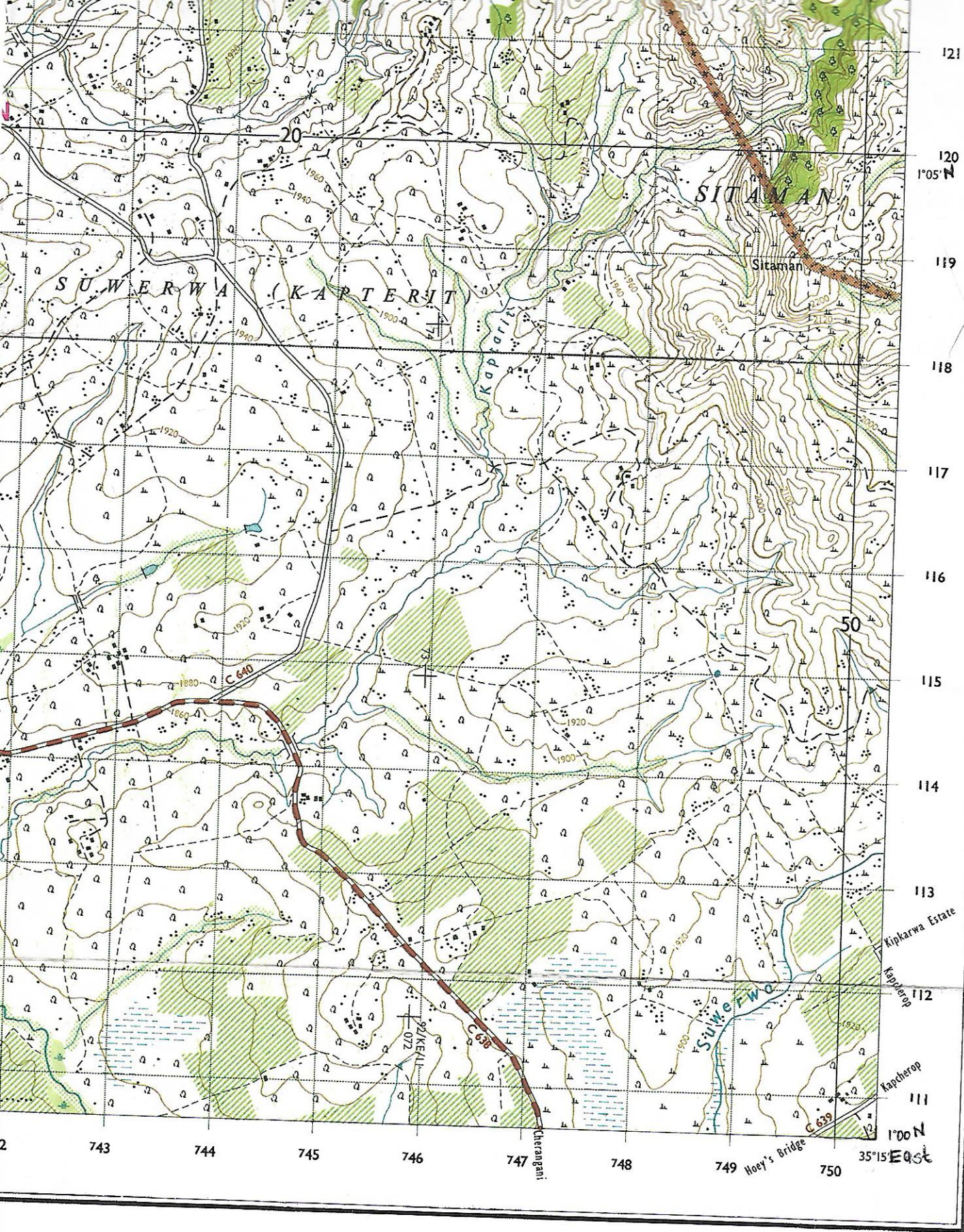
- a.
 - i. Give the latitudinal extent of the South East corner of the area covered by the map (2 marks)
 - ii. Identify **two** types of scales used on the map (2 marks)
 - iii. Name any **two** areas to adjoining sheets of the mapped area (2 marks)
- b.
 - i. Give the **four figure** grid reference of the AirPhoto Principal Point **92/KE/11 072** (2 marks)
 - ii. Give that the map distance of All Weather Road Loose surface from Cherenganyi to the junction at road C640 is 14cm, calculate the ground distance in kilometers (2 marks)
- c.
 - i. Describe the vegetation covered by the area covered by the section of the map. (3marks)
 - ii. Citing evidence from the map, identify one economic activity carried out in the area covered by the map. (2 marks)
 - iii. Explain **two** factors that have influenced the distribution of settlement in the area covered by the map (4mks)
- d.
 - i. Draw a rectangle measuring 10cm by 5cm to represent the area enclosed by Eastings 46-50 and Northings 11-14 (1mark)
 - ii. On it mark and label the following (4marks)
 - Road

- Swamp
- River
- Plantation

INDEX TO ADJOINING SHEETS

UGANDA	74/2 (UGANDA 55/2) KANYARKWAT	75/1 KONGELAI	75/2 SIGOR
	74/4 (UGANDA 55/4) ENDEBESS		KENYA 75/4 GHERANGANY
	88/2 KIMININI	89/1 HOEYS BRIDGE	89/2 MOIBEN

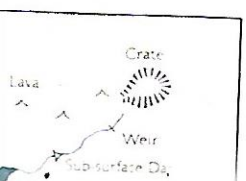




Printed for D.O.S. by the Ordnance Survey.

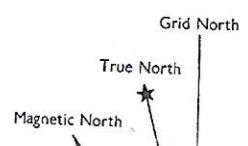
Map users are invited to inform the Director of Surveys, P.O. Box 30046, Nairobi, Kenya, of any errors or additions.

Reprinted by Survey of Kenya 500/5/76
 Reprinted by Survey of Kenya 2000/6/82



CONVERSION TABLE

Metres	Feet
3000	10000



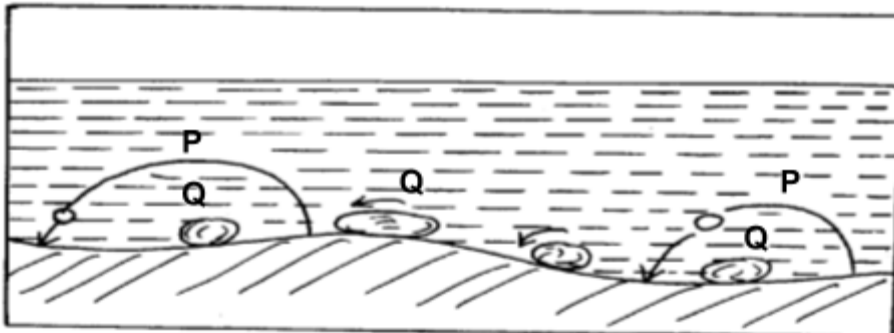
Grid :- U.T.M. Zone 36
 Projection :- Transverse Mercator
 Spheroid :- Clarke 1880 (Modified)
 Unit of Measurement :- Metre
 Meridian of Origin :- 33°00' East of Greenwich

7

- a.
- i. What is vulcanicity ? (2 marks)
 - ii. Describe how the following features are formed
 - 1. Sill (3 marks)
 - 2. Hot springs (5 marks)
- b. Your class intends to carry out a field study on the floor of Rift Valley
- i. Which three volcanic features would you identify ? (3 marks)
 - ii. State three problems you are likely to experience. (3 marks)
 - iii. Give three follow up activities you would be involved in after the field study. (3 marks)
- c. Explain three ways in which volcanic mountains positively influence human activities. (6marks)

8.

- a.
- i. What is a delta (1 mark).
 - ii. State two conditions that may lead to formation of coastal deltas (2 marks)
 - iii. Describe how an arcuate delta is formed. (5 marks)
- b.
- i. The diagram below shows ways through which water transports its load. Name the two ways labelled P and Q (2 marks)



ii) Explain two factors that influence river transportation. (4 marks)

d.

You are planning to carry out a field study on the long profile of a river valley.

- i. Give three reasons as to why the class would require a route map. (2 marks)
- ii. State two advantages of dividing the class into groups according to the stages of the long profile of the river. (2 marks)
- iii. Mention three reasons why it would be necessary to pre-visit the area of study. (3 marks)
- iv. Explain two ways in which features resulting from river erosion are of significance to human activities. (4mks)

9.

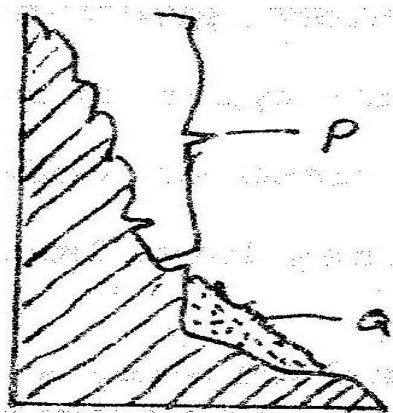
a.

- i. Explain two ways in which plants cause weathering (4 marks)
- ii. Describe how an avalanche occurs (4 marks)

b.

- i. Differentiate between Mass wasting and Mass movement (2marks)
- ii. State three conditions which may influence the occurrence of landslides (3 marks)

c. Using the diagram below answer part b of the question.



- i. Name type of mass movement shown (1mark)
- ii. The features marked P and Q (2 marks)
- iii. State three evidence of soil creep. (3 marks)

d. Explain three positive effects of weathering on human activities.
(marks)

(6

This is the Last Page of the Exam